

You are Invited to the

# 14<sup>th</sup> Annual Conservation Easement Workshop

Hosted by the Madison-Morgan Conservancy in partnership with the Georgia-Alabama Land Trust (Accredited) and the Atlanta Area Chapter Appraisal Institute

Sponsored by:



## EVENT DETAILS

**Thursday, September 20, 2018**

**8:00 a.m. - 5:00 p.m.**

**Burge Plantation**

44 Jeff Cook Rd, Mansfield, GA, 30055

(Less than 1 hour from downtown Atlanta)

*Lunch included by Chef Andrew Featherstone of Burge Plantation  
- sourced mostly from Burge Organic Farm Ingredients*

## CONTINUING EDUCATION

**Lawyers:** 7 hours General including 1 hour Ethics CLE (Approved)

**Foresters:** 6 hours Category 2 CFE (Approved)

**CPAs:** CPE credit also available

**Real Estate Professionals (Including Appraisers, Brokers, and Salespeople):** 7 hours CE (Approved)

## WORKSHOP FEE

**Registration Opens Monday, July 30, 2018**

*Register Early - Space is Limited*

**\$300** per person with continuing education credits

**\$265** per person without continuing education credits

## PRESENTERS

**Katherine Eddins**, Georgia-Alabama Land Trust

**Lucus Von Esh**, Lucus Mason, Inc.

**Ronald Levitt**, Sirote & Permutt

**Jack Sawyer**, Alston & Bird

**J. Carl Schultz, Jr.**, MAI, CRE, SRA, SGA, Integra Realty Resources

**Stephanie Surles**, Howard, Moore, McDuffie, P.C.

## REGISTER

**Register online:**

<http://www.mmcGeorgia.org>

**Register by Mail:**

Fill out the Registration Form, enclose payment, and mail to:

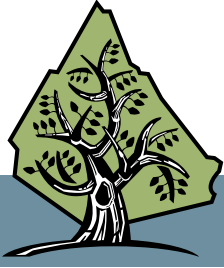
**Madison-Morgan Conservancy**  
**PO Box 752 | Madison, GA 30650**

## QUESTIONS

**Madison-Morgan Conservancy**

(706) 818-8046 | [info@mmcGeorgia.org](mailto:info@mmcGeorgia.org)

[www.mmcGeorgia.org](http://www.mmcGeorgia.org)



Madison-Morgan Conservancy

## 14<sup>th</sup> Annual Conservation Easement Workshop

September 20, 2018 | Burge Plantation | Mansfield, GA

# AGENDA

- 8:00 A.M.**      **Coffee and Registration**
- 8:25 A.M.**      **Welcome**  
Christine McCauley Watts, *Madison-Morgan Conservancy*
- 8:30 A.M.**      **CE Amendments, Condemnation, and Perpetuity Provisions**  
Katherine Eddins, *Georgia-Alabama Land Trust*
- 9:30 A.M.**      **CE Audits: Legal Strategies and Outcomes**  
Jack Sawyer, *Alston & Bird*
- 10:30 A.M.**      **Break**
- 10:45 A.M.**      **Appraisal Approaches for CE Donations**  
J. Carl Schultz, Jr., MAI, CRE, SRA, SGA; *Integra Realty Resources*
- 11:30 A.M.**      **Q&A**
- 12:45 P.M.**      **Lunch** by Chef Andrew Featherstone of Burge Plantation with fresh organic produce sourced mostly from Burge Organic Farm
- 12:45 P.M.**      **CE Case Law Review**  
Ronald Levitt, *Sirote & Permutt, PC*
- 1:45 P.M.**      **How Mineral Appraisals are Changing the Landscape**  
Lucus Von Esh, *Lucus Mason, Inc.*
- 2:45 P.M.**      **Break**
- 3:00 P.M.**      **The New Tax Code: Implications for CE Transactions**  
Stephanie Surles, *Howard, Moore, & Mcduffie, P.C.*
- 4:00 P.M.**      **Ethical and Professional Considerations of LTA's New Standards & Practices**  
Katherine Eddins, *Georgia-Alabama Land Trust*
- 4:50 P.M.**      **Q&A**
- 5:00 P.M.**      **Adjourn**

Questions & Registration: Madison-Morgan Conservancy  
706-818-8046 | [INFO@MMCGEORGIA.ORG](mailto:INFO@MMCGEORGIA.ORG) | [WWW.MMCGEORGIA.ORG](http://WWW.MMCGEORGIA.ORG)



Madison-Morgan Conservancy  
**14<sup>th</sup> Annual Conservation Easement Workshop**  
 September 20, 2018 | Burge Plantation | Mansfield, GA

# REGISTRATION

## WORKSHOP FEE

### Select One:

- \$300** per Lawyer receiving 7 hours General and 1 hour Ethics CLE (Approved)
- \$300** per Forester receiving 6 hours Category 2 credits CFE (Approved)
- \$300** per CPA receiving CPE credit
- \$300** per Real Estate Professional receiving 7 hours CE (Approved)
- \$265** per person receiving no continuing education credits

## ADVERTISEMENT FEE

- \$100** per 1/2 page ad in guidebook (4.25 x 5.25 inches, .pdf or .jpeg file)

First Name

Last Name

Company

Mailing Address

City

State

Zip

Email

Phone

Please note any diet restrictions here:

## PAYMENT

Refunds will be given only if registration is canceled by September 7, 2018. Make check payable to Madison-Morgan Conservancy, and send to PO Box 752, Madison, GA 30650. Or pay by Credit Card.

Payment Type (circle one)

Check

Credit Card

Total Due

We will add a 3.5% transaction fee to credit card payments.

\$

Credit Card Number

Expiration Date

CVV

Billing Zip Code

## LODGING

Preferred lodging is available in Madison:

The Brady Inn | [www.bradyinn.com](http://www.bradyinn.com)

Hundred Acre Farm | [www.thefarmhouseinn.com](http://www.thefarmhouseinn.com)

The James Madison Inn | [www.jamesmadisoninn.com](http://www.jamesmadisoninn.com)

Kirby House, Madison | [www.kirbyhouse.us](http://www.kirbyhouse.us)

Southern Cross Guest Ranch | [www.southcross.com](http://www.southcross.com)

Questions & Registration: Madison-Morgan Conservancy  
 706-818-8046 | [INFO@MMCGEORGIA.ORG](mailto:INFO@MMCGEORGIA.ORG) | [WWW.MMCGEORGIA.ORG](http://WWW.MMCGEORGIA.ORG)