



You are Invited to the

14th Annual Conservation Easement Workshop

Hosted by the Madison-Morgan Conservancy in partnership with the
Georgia-Alabama Land Trust (Accredited)

Sponsored by:



EVENT DETAILS

Thursday, September 20, 2018

8:00 a.m. - 5:00 p.m.

Burge Plantation

44 Jeff Cook Rd, Mansfield, GA, 30055

(Less than 1 hour from downtown Atlanta)

*Lunch included by Chef Andrew Featherstone of Burge Plantation
- sourced mostly from Burge Organic Farm Ingredients*

CONTINUING EDUCATION

Lawyers: 7 hours General including 1 hour Ethics CLE
(Applied for)

Foresters: 6 hours Category 2 CFE (Applied for)

CPAs: CPE credit also available

**Real Estate Professionals (Including Appraisers,
Brokers, and Salespeople):** 7 hours CE (Applied for)

WORKSHOP FEE

Registration Opens Monday, July 30, 2018

Register Early - Space is Limited

\$300 per person with continuing education credits

\$265 per person without continuing education credits

PRESENTERS

Katherine Eddins, Georgia-Alabama Land Trust

Lucus Von Esh, Lucus Mason, Inc.

Ronald Levitt, Sirote & Permutt

Jack Sawyer, Alston & Bird

J. Carl Schultz, Jr., MAI, CRE, SRA, SGA, Integra Realty
Resources

Stephanie Surles, Howard, Moore, McDuffie, P.C.

REGISTER

Register online:

<http://www.mmcGeorgia.org>

Register by Mail:

Fill out the Registration Form, enclose payment,
and mail to:

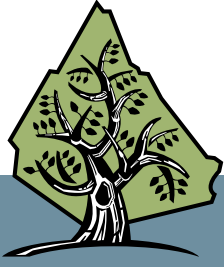
Madison-Morgan Conservancy
PO Box 752 | Madison, GA 30650

QUESTIONS

Madison-Morgan Conservancy

(706) 818-8046 | info@mmcGeorgia.org

www.mmcGeorgia.org



Madison-Morgan Conservancy

14th Annual Conservation Easement Workshop

September 20, 2018 | Burge Plantation | Mansfield, GA

AGENDA

- 8:00 A.M.** **Coffee and Registration**
- 8:25 A.M.** **Welcome**
Christine McCauley Watts, *Madison-Morgan Conservancy*
- 8:30 A.M.** **CE Amendments, Condemnation, and Perpetuity Provisions**
Katherine Eddins, *Georgia-Alabama Land Trust*
- 9:30 A.M.** **CE Audits: Legal Strategies and Outcomes**
Jack Sawyer, *Alston & Bird*
- 10:30 A.M.** **Break**
- 10:45 A.M.** **Appraisal Approaches for CE Donations**
J. Carl Schultz, Jr., MAI, CRE, SRA, SGA; *Integra Realty Resources*
- 11:30 A.M.** **Q&A**
- 12:45 P.M.** **Lunch** by Chef Andrew Featherstone of Burge Plantation with fresh organic produce sourced mostly from Burge Organic Farm
- 12:45 P.M.** **CE Case Law Review**
Ronald Levitt, *Sirote & Permutt, PC*
- 1:45 P.M.** **How Mineral Appraisals are Changing the Landscape**
Lucus Von Esh, *Lucus Mason, Inc.*
- 2:45 P.M.** **Break**
- 3:00 P.M.** **The New Tax Code: Implications for CE Transactions**
Stephanie Surles, *Howard, Moore, & Mcduffie, P.C.*
- 4:00 P.M.** **Ethical and Professional Considerations of LTA's New Standards & Practices**
Katherine Eddins, *Georgia-Alabama Land Trust*
- 4:50 P.M.** **Q&A**
- 5:00 P.M.** **Adjourn**

Questions & Registration: Madison-Morgan Conservancy
706-818-8046 | INFO@MMCGEORGIA.ORG | WWW.MMCGEORGIA.ORG



Madison-Morgan Conservancy
14th Annual Conservation Easement Workshop
 September 20, 2018 | Burge Plantation | Mansfield, GA

REGISTRATION

WORKSHOP FEE

Select One:

- _____ **\$300** per Lawyer receiving 7 hours General and 1 hour Ethics CLE (Applied for)
- _____ **\$300** per Forester receiving 6 hours Category 2 credits CFE (Applied for)
- _____ **\$300** per CPA receiving CPE credit
- _____ **\$300** per Real Estate Professional receiving 7 hours CE (Applied for)
- _____ **\$265** per person receiving no continuing education credits

ADVERTISEMENT FEE

- _____ **\$100** per 1/2 page ad in guidebook (4.25 x 5.25 inches, .pdf or .jpeg file)

First Name

Last Name

Company

Mailing Address

City

State

Zip

Email

Phone

Please note any diet restrictions here:

PAYMENT

Refunds will be given only if registration is canceled by September 7, 2018. Make check payable to Madison-Morgan Conservancy, and send to PO Box 752, Madison, GA 30650. Or pay by Credit Card.

Payment Type (circle one)

Check

Credit Card

Total Due

We will add a 3.5% transaction fee to credit card payments.

\$

Credit Card Number

Expiration Date

CVV

Billing Zip Code

LODGING

Preferred lodging is available in Madison:

The Brady Inn | www.bradyinn.com

Hundred Acre Farm | www.thefarmhouseinn.com

The James Madison Inn | www.jamesmadisoninn.com

Kirby House, Madison | www.kirbyhouse.us

Southern Cross Guest Ranch | www.southcross.com

Questions & Registration: Madison-Morgan Conservancy
 706-818-8046 | INFO@MMCGEORGIA.ORG | WWW.MMCGEORGIA.ORG